

**Model Number**

Thermo Scientific TSX60086CA

**Application and Rating**

Application	Storage of General (non-flammable) Laboratory Materials
Storage Volume	28.79 cu. ft. (815 liters), 600 Standard 2" Boxes
Temperature Rating	-50°C to -86°C
Electrical Power	100V - 230V 50/60Hz
Instrument Rated Current	8.9A - 4.9A (115V 60hz 8.4A, 208-230V 60hz 4.1A)
Recommended Building Supply Rating	Type C circuit protection or similar required, Ensure compliance with local electric code
Power Plug / Power Cord	Country Dependent Plug / IEC Cords, 10 ft (3.05 m)
Agency Listings	UL, cUL, CE, Energy Star
Application Environment	Non-Corrosive, Non-Flammable, Non-Explosive Indoor Use Only, Ventilated 15 - 32°C (59 - 90°F) < 60% RH

**Dimensions and Construction**

Interior Dimensions (H x D x W)	51.2 x 28.3 x 34.4 in. (1300 x 719 x 874 mm)
Exterior Dimensions (H x D x W)	78 x 37 x 39.6 in. (1981 x 978 x 1006 mm)
Shipping Dimensions	83 x 45 x 52.5 in. (2108 x 1143 x 1334 mm)
Shipping Weight / Net Weight	833 / 722 lbs (378 / 327 kg)
Insulation	Vacuum Insulation Panels with High-Density Water-Blown Polyurethane Foam, Electric Heater at Breaker Area
Door	Single Outer: Silicone-Based Gasket Seal Number of Inner: 2x Stainless Steel (5x Optional)
Shelves	3x Stainless Steel (4x Optional) Adjustable Shelves in 1" (25 mm) Increments
Shelf Capacity	Shelf: 245 lbs / 111 kg Cabinet Load not to Exceed: 1140 lbs (517 kg)
Interior / Exterior Wall Material	Painted Steel (Stainless Steel Optional) / Painted Steel
Casters	4x Standard All-Direction with Locks
Locking mechanism	Handle Key Lock and Pad Lock Loop Standard
Back Up Systems	LN2 or CO2 Optional

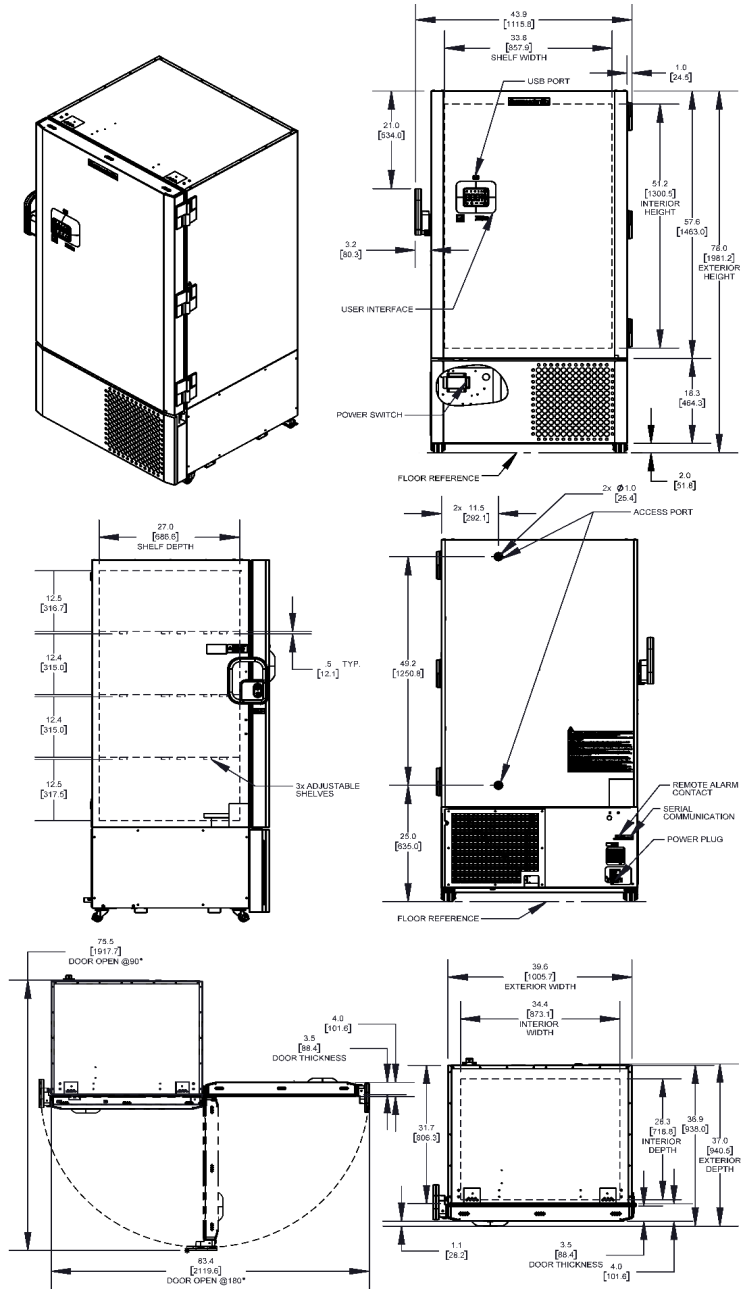
**Electrical System Configuration**

Power Switch	Main Circuit Breaker (Behind Grill Door)
Controller Type	7-segment Display with Capacitive Touch Screen Buttons with USB Data Retrieval at Eye Level
Control Security	Setpoint Setting, Passcode Access Control
Compressor Safe Guard	High Temp Cutout Switch, Current, Logic protection
Control Sensor	Single RTD (1000 ohm Platinum RTD, class B, -196°C)
Remote Outputs	RS485, 4-20 mA Output, Remote Warning Dry Contacts
Thermo Fisher Cloud	InstrumentConnect™ Compatible with Accessory
Adjustable Warm/Cold Alarms	Adjustable in 1°C Increments

**Refrigeration Configuration**

Refrigeration System	Two Stage Cascade System
Compressor/Number	Variable Speed Industrial Rated, Hermetically Sealed / 2
Compressor Capacity*	938 W (max. speed)
Condenser Type	Enhanced Micro-Channel and Forced-Air Cooled
Expansion Device	Capillary Tube
Evaporator Type	Enhanced Cold Wall Design
Defrost Method	Manual Defrost
Refrigerant (1st/2nd Stage)	R290 / R170 + R290 Mix
Flammable	Yes

**Dimensions in inch [metric in: mm]**



TDS\_600 Thermo Scientific

1) Data is representative of performance and not published product specifications. Technical data sheet test results should not be referenced in developing any regulatory parameters for specific customer usage.  
 2) Freezer performance will vary based on customer product volume, storage format, options selected, operating conditions, test methodology and performing recommended maintenance.  
 3) Continuous product enhancements may, without notice, result in amendments or omissions to this technical data sheet. Thermo Scientific cannot accept responsibility for damage, injury, loss or expenses resulting from misapplication of the information herein.

\* Manufacturer measured compressor capacity taken at LBP: ASHRAE condition.  
 © 2019 Thermo Fisher Scientific Inc. All rights reserved. All trademarks are the property of Thermo Fisher Scientific Inc. and its subsidiaries. Specifications, terms and pricing are subject to change.  
 Not all products are available in all countries. Please consult your local sales representative for details.



**Model Number**

Thermo Scientific TSX60086CA

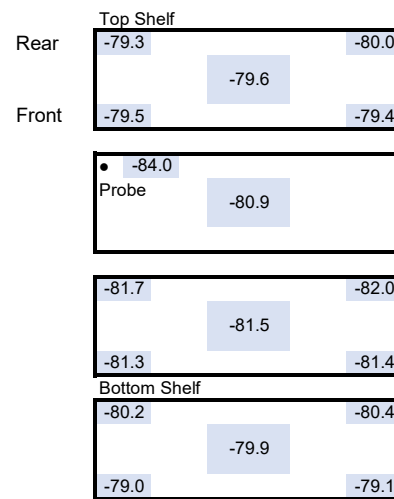
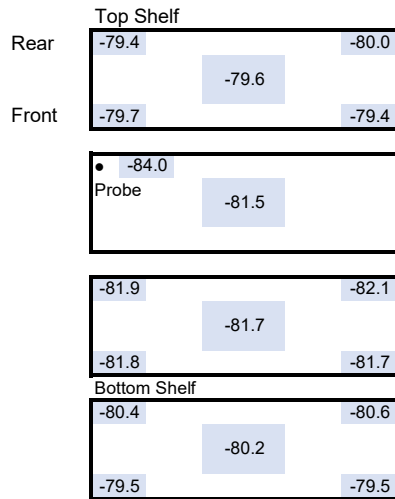
**Performance**

	Ambient °C	20				24			
		-80	-70	-60	-50	-80	-70	-60	-50
Setpoint	°C	-80	-70	-60	-50	-80	-70	-60	-50
Energy Consumption	kWh/day	8.0	5.5	4.5	4.0	9.0	6.0	5.0	4.5
Heat Rejection Rate	Btu/h (W)	1137 (333)	782 (229)	640 (188)	569 (167)	1280 (375)	853 (250)	711 (208)	640 (188)
Peak Variation from Setpoint	°C	-3/1.5	-3/3	-3/4	-4.5/5	-3/1.5	-3/3	-3/4.5	-4.5/5.5
Average Uniformity	°C	4.0	5.0	6.0	8.0	4.0	5.0	6.0	8.0
Average Stability	°C	<0.5	<2	<2.5	<2.5	<0.5	<2	<2.5	<2
Average Cabinet Temperature	°C	-80.8	-70.6	-60.7	-50.1	-81.0	-70.4	-60.6	-49.8
1-min Door Opening Recovery to -75°C	min	20				26			
Pull Down Time to -80°C	min	308				334			
Warm Up Time -80°C to -50°C	min	288				267			
Energy star rating	kwh/day/cuft					0.27			
Sound Pressure Level	dBA	44							

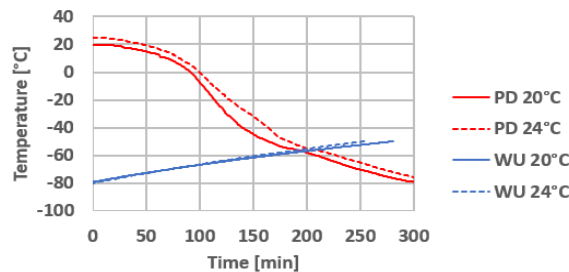
**Cabinet Temperature Distribution at -80°C Setpoint [°C]**

20°C Ambient

24°C Ambient



**Pull Down and Warm Up at 20°C and 24°C Ambient**



1) Data is representative of performance and not published product specifications. Technical data sheet test results should not be referenced in developing any regulatory parameters for specific customer usage.  
 2) Freezer performance will vary based on customer product volume, storage format, options selected, operating conditions, test methodology and performing recommended maintenance.  
 3) Continuous product enhancements may, without notice, result in amendments or omissions to this technical data sheet. Thermo Scientific cannot accept responsibility for damage, injury, loss or expenses resulting from misapplication of the information herein.  
 4) Actual temperature measurement will vary based on type and location of the probe used.