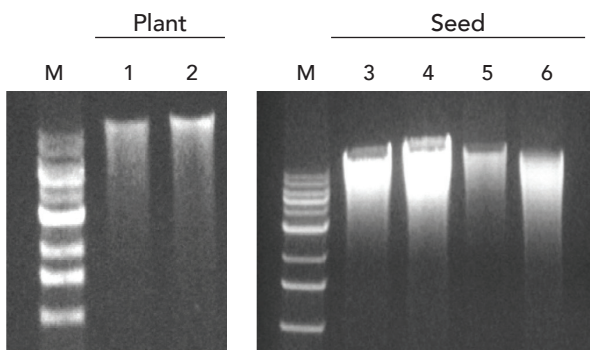


# Inhibitor-Free Plant DNA

**Quick-DNA™ Plant/Seed Kits** (stems, roots, leaves, fruits, seeds, etc.)

- **Boost Detection:** Included BashingBeads™ ensure complete lysis of tough-to-lyse samples.
- **Inhibitor-Free:** Ready for qPCR, Next-Gen Sequencing, arrays, etc.
- **Simple Workflow:** Lyse, purify on column, and filter to remove PCR inhibitors.

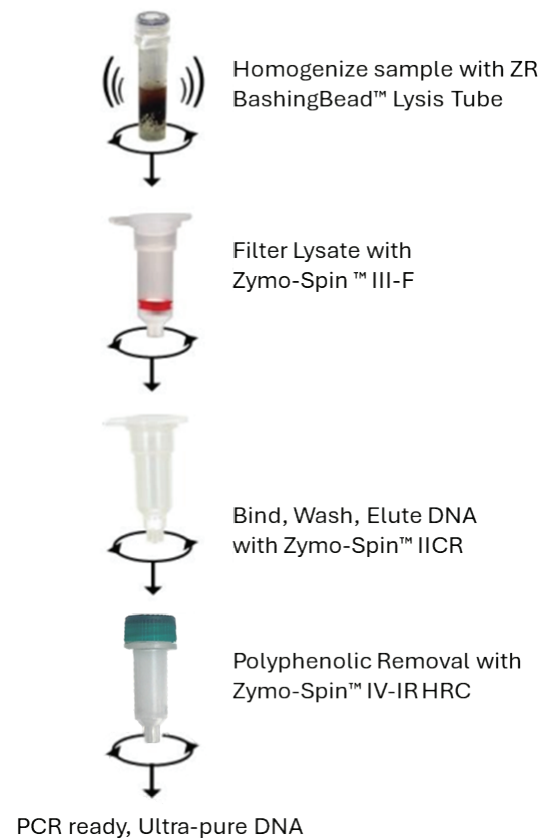
## High Recovery



Comparison of DNA yields from various plant and seed samples using the Quick-DNA™ Plant/Seed Kit. Equivalent amounts of plant materials were processed with equal volumes of eluted DNA analyzed in a 0.8% (w/v) agarose gel stained with EtBr. Arabidopsis thaliana (1), juniper (2), corn kernel (3, 4), sunflower seed (5, 6).

All Zymo Research environmental kits include BashingBead™ technology for complete recovery of DNA from a wide variety of tough-to-lyse samples. Included is column technology for efficient inhibitor removal.

## Simple Workflow



Product	Cat. No.	Size	Binding Capacity	Minimum Elution	Input
Quick-DNA™ Plant/Seed Miniprep Kit	D6020	50 preps	25 µg	50 µl	≤ 150 mg
Quick-DNA™ Plant/Seed 96 Kit	D6021	2 x 96 preps	5 µg	50 µl	≤ 80 mg